



ASSISTED REPRODUCTION

Needles & Catheters

From the beginning

QUALITY CONTROL | OOCYTE RETRIEVAL | ANDROLOGY & IUI | FERTILIZATION | CULTURE | PGD & PGS | CRYOPRESERVATION | EMBRYO TRANSFER



CooperSurgical Fertility Companies

From the Beginning

Over 37 years ago we worked with the pioneers of IVF to design the first Wallace® embryo transfer catheter. We believed that creating the softest method to place the embryo back into the uterus would give families the best chance of success¹⁻⁵.

We have continued to work closely with IVF experts as our product range has evolved, and still maintain the original hand-crafted soft embryo catheter tip. To this day we remain the catheter of choice for many clinics across the globe and are continually associated with the highest pregnancy rates¹⁻⁵.

The Wallace and ORIGIO ranges of needles and catheters have come together to provide the most comprehensive choice.



CooperSurgical Fertility Companies

Our Company

The Wallace brand of embryo transfer catheters and oocyte recovery needles has become part of the CooperSurgical family. They now feature amongst the innovative products, solutions and services offered by CooperSurgical Companies for the complete IVF process.

Our Quality

We understand the importance of providing customers with the highest quality devices, so we ensure MEA and LAL testing is carried out on all individual batches.

All our manufacturing sites are certified against the internationally recognized quality standards ISO9001:2008, ISO13485:2003 enabling us to apply the CE mark to our devices.

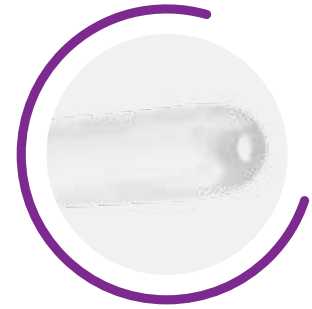
For references please see page 12



Evolution of the Catheter

Classic Catheter

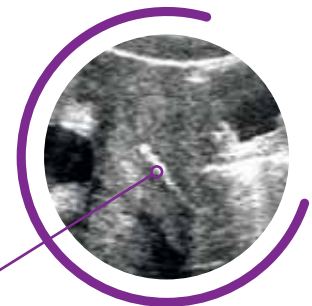
Our Classic embryo transfer catheter has been used since IVF practice began. Its soft handcrafted inner lumen and formable outer sheath is associated with some of the highest pregnancy rates across the world¹⁻⁵.



SureView[®] Catheter

Using patented technology, SureView is the first catheter, and only one of its kind, that is visible from tip to hub under ultrasound guidance⁷. More and more clinicians and embryologists are witnessing a marked improvement in pregnancy rates when using ultrasound during embryo transfer procedures⁶⁻¹¹.

Ultrasound image of the SureView catheter within the uterus



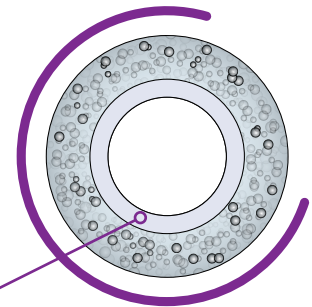
SureView Technology

The SureView catheter features the unique handcrafted tip and smooth inner surface used for the Wallace Classic catheter.

SureView cross section

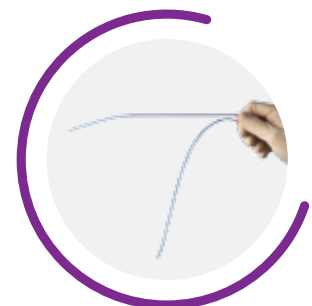
(Bubbles shown are for representation only)

Thickness of smooth inner layer is 0.14mm (± 0.05)



Sure-Pro[®] Catheter

The Sure-Pro and Sure-Pro Ultra embryo transfer catheters give added support and control when presented with a potentially difficult procedure. With several pack variations available, the catheter can be provided with both Classic and SureView inners, and with a malleable stylet or flexible obturator.



Spherical Tip Catheter

We do not want to limit your clinical preference, which is why we offer the Spherical Tip Catheter. The spherical shape at the end of the outer catheter allows greater control during catheter insertion and the soft formable stylet does not compromise the performance of the outer sheath when in use.

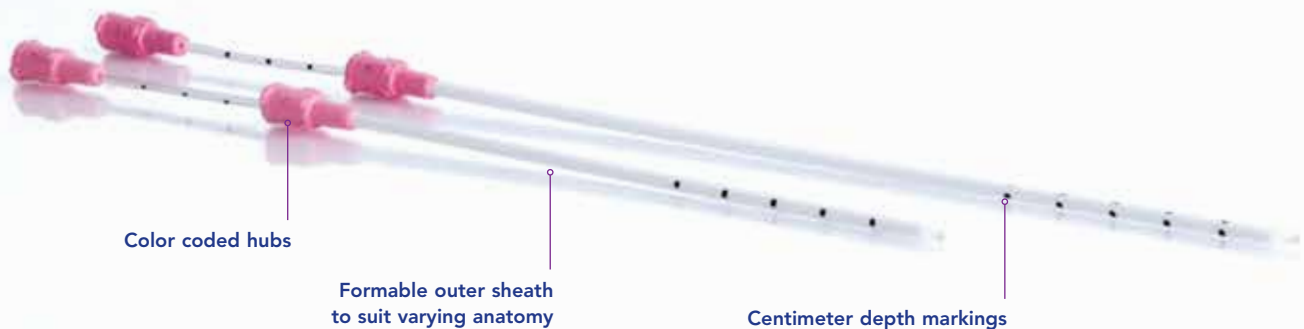


Wallace Classic

Soft Embryo Transfer Catheters

Our Classic range offers a soft-profiled tip associated with some of the highest pregnancy rates across the world¹⁻⁵.

Classic Embryo Transfer Catheter (18/23cm)



Key Product Benefits

- Soft material and smooth tip minimizes trauma and maximizes success rates¹⁻⁵
- Formable outer sheath to suit different patient anatomies
- Centimeter markings to show outer sheath depth and inner lumen protrusion for confidence of placement within the uterus
- Trial transfer catheters allow for confident positioning of the outer sheath before introducing the embryo loaded inner. Clinicians have found this technique to have a positive impact on pregnancy rates⁶
- The Classic range is fully compatible with the SureView range

For references please see page 12

Classic Trial Transfer Catheter (18/23cm)



Intermediate Embryo Transfer Catheter - stiffer than Classic (18cm/23cm)



Malleable Stylet - for difficult transfers (18cm/23cm)



Hand-crafted soft inner catheter



Smooth tip transition with outer sheath



Inner catheter position in uterus

Wallace SureView

Ultrasound Visible Embryo Transfer Catheters

The unique SureView catheter allows full visibility under ultrasound guidance⁶ whilst incorporating the hand-crafted tip of the widely successful Classic catheter. Ultrasound guided embryo transfer procedures have been recognized by many clinicians and embryologists to improve pregnancy rates⁷⁻¹².

SureView Embryo Transfer Catheter & Trial Transfer Catheter (18/23cm)



Key Product Benefits

- Visible under ultrasound from hub to tip⁷
- More accuracy and confidence when positioning catheter tip within uterus for embryo transfer
- Combines benefits of the Classic range with SureView patented technology
- Compatible with the Wallace Malleable Stylet for difficult transfers
- The SureView range is fully compatible with the Classic range

For references please see page 12

SureView Embryo Transfer Catheter (18/23cm)



SureView Trial Transfer Catheter (18/23cm)



SureView micro bubbles are present throughout catheter length



Cross section illustrating micro bubbles and smooth internal lumen



SureView catheter shown within the uterus

Wallace Sure-Pro Range

Supported Embryo Transfer Catheters

The Sure-Pro range features the hand-crafted inner catheter tip of the Wallace Classic, with the added benefit of a supported inner catheter to improve control during handling.

Sure-Pro and Sure-Pro Ultra embryo transfer catheters feature a supported and soft-tipped inner catheter, utilising the Wallace Classic design. You also have the option to use a soft obturator or stylet to help navigate a pathway through the cervical canal, enabling the inner catheter to pass through the uterus.



Key Product Benefits

- Supported inner catheter for increased control during handling and insertion
- Pre-formed curve on outer sheath to help navigate the cervical canal
- Adjustable silicone marker for depth guidance and tip orientation
- Available with a soft obturator and firm stylet to suit various techniques and patient anatomies
- Formable outer sheath allowing for accentuation or smoothing of the pre-formed curve

Sure-Pro Ultra configurations are designed to suit various techniques and clinical situations whilst offering the recognised benefits of a soft inner catheter and echogenic visibility.

The sterile triple pouch option allows clinicians to take the outer sheath and the obturator or stylet into the theatre, whilst the embryologist takes the inner catheter sterile pouch to the lab to prepare and load the embryo for transfer. Both products are also available with an additional pouch for the aseptic technique, enabling sterility to be maintained from laboratory to theatre.

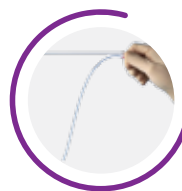
For references please see page 12



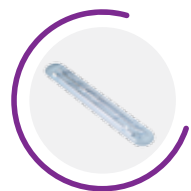
Soft hand-crafted tip to facilitate a smooth passage through the cervix¹⁻⁵



Pre-formed angle on outer sheath



Supported Wallace Sure-Pro compared with Wallace Classic

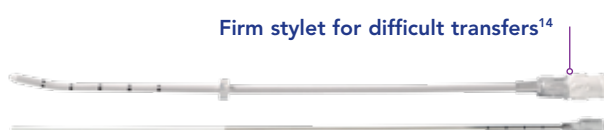


Sure-Pro supplied in a procedural tray to maintain sterility whilst handling

Sure-Pro Embryo Transfer Catheter



Sure-Pro Embryo Transfer Catheter with firm stylet PPS623 (23cm)



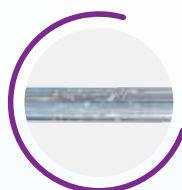
Sure-Pro Embryo Transfer Catheter with soft obturator PPB623 (23cm)



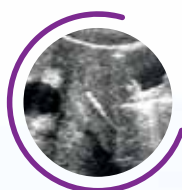
Wallace Sure-Pro Ultra

Supported Ultrasound Visible Embryo Transfer Catheters

The Sure-Pro Ultra range features the unique echogenic properties of the SureView catheter whilst continuing to offer the recognized benefits of a soft, hand-crafted inner catheter tip.



SureView micro bubbles are present throughout catheter length



SureView catheter shown within the uterus



Cross section illustrating micro bubbles and smooth internal lumen

ORIGIO Spherical Tip

Supported Catheters

Our range of Spherical Tip catheters come individually sterile pouch packed for a "one-step" or "two-step" embryo transfer procedure.

Spherical Tip Catheter



Key Product Benefits

- Spherical shape at the end of the outer catheter for greater control during catheter insertion
- Pre-formed angled tip 2cm from end of the outer catheter to aid insertion
- Unique hub for greater handling, grip, accuracy and control
- Soft formable stylet that does not compromise the performance of the outer sheath when in use
- Available in 24cm length
- Cervical stopper placed on the outer catheter to aid placement
- Available in our EchoGen™ range for visibility under ultrasound



EchoGen Technology for visibility under ultrasound



Spherical shaped outer catheter



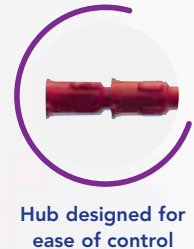
Hub designed to ease handling and grip

Wallace Intra-uterine

Insemination Catheters

The Wallace IUI catheter is a premium quality device featuring a smooth tip and formable outer sheath for optimal control over placement within the uterus. The two-piece design replicates the Wallace Classic catheter, which is also suitable for training embryo transfer techniques.

Artificial Insemination Catheter - for intra-uterine insemination AIC18 (18cm)



Key Product Benefits

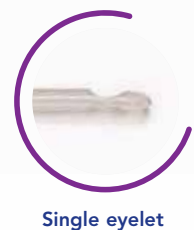
- Flexible outer sheath with memory, can be pre-curved to aid insertion
- Smooth rounded tip to minimize trauma and maximize success rates¹⁵
- Similar catheter design to Wallace Embryo Transfer Catheter range, helping develop an effective technique
- Bilateral side eyes for maximum dispersion of sperm and minimal risk of blockage
- Compatible with the Wallace stylet for difficult procedures

ORIGIO IUI Catheters*

Insemination Catheters

Versatile range to match the patient's anatomy and your preference

Artificial Insemination Catheters (INCA140)



Key Product Benefits

- Ergonomically designed handle for greater control
- Available in 3 different lengths
- Single and side eyelet options
- Gamma sterilized

For references please see page 12

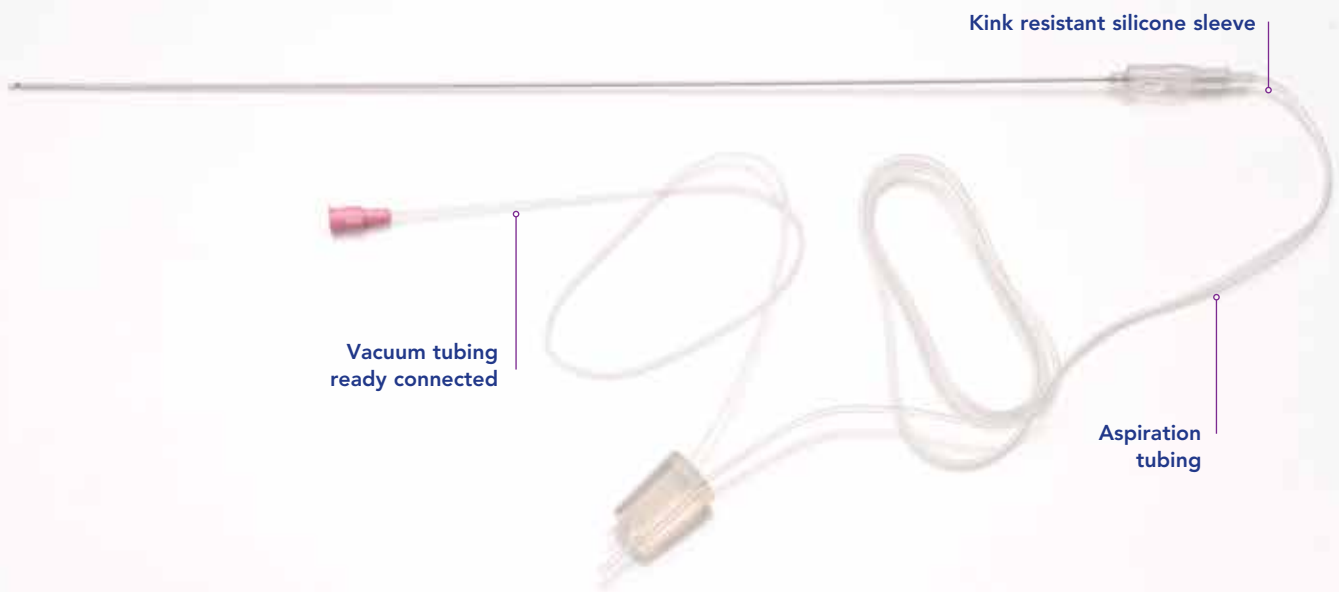
*Not available in the USA

Wallace Single Lumen Oocyte

Recovery Systems

The single lumen needle range features a tri-faceted tip ensuring optimal sharpness and accuracy during placement. The needle is available as a stand alone unit* and with a variety of tubing lengths to suit clinical preference.

Wallace Single Lumen Oocyte Recovery System (18g)



Key Product Benefits

- Sharp, non-coring needle tip to minimize patient trauma
- Echo marked to the very tip for accurate placement under ultrasound guidance
- Available with a luer lock connected at the bung for intermittent flushing of the follicle
- Silicone bung for an easy and secure fit with test tubes
- Color coded tubing sleeves:
 - 16g = Blue
 - 17g = Red
 - 18g = White
- Needle Length: 33cm

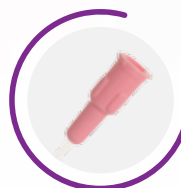
*Not available in the USA



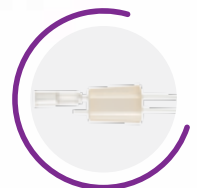
Triple ground needle tip for optimum sharpness



Echo markings at needle tip



Luer lock compatible connections



Available with luer lock at bung for intermittent flushing

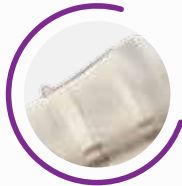
Wallace Dual Lumen Oocyte^{*}

Recovery Systems

The dual lumen needle range features a fully integrated flushing line running from hub to needle tip, giving maximum protection to the oocyte during extraction.



Available in 16g and 17g with color coded sleeves



Orientation marker to identify needle bevel



Echo markings at needle tip



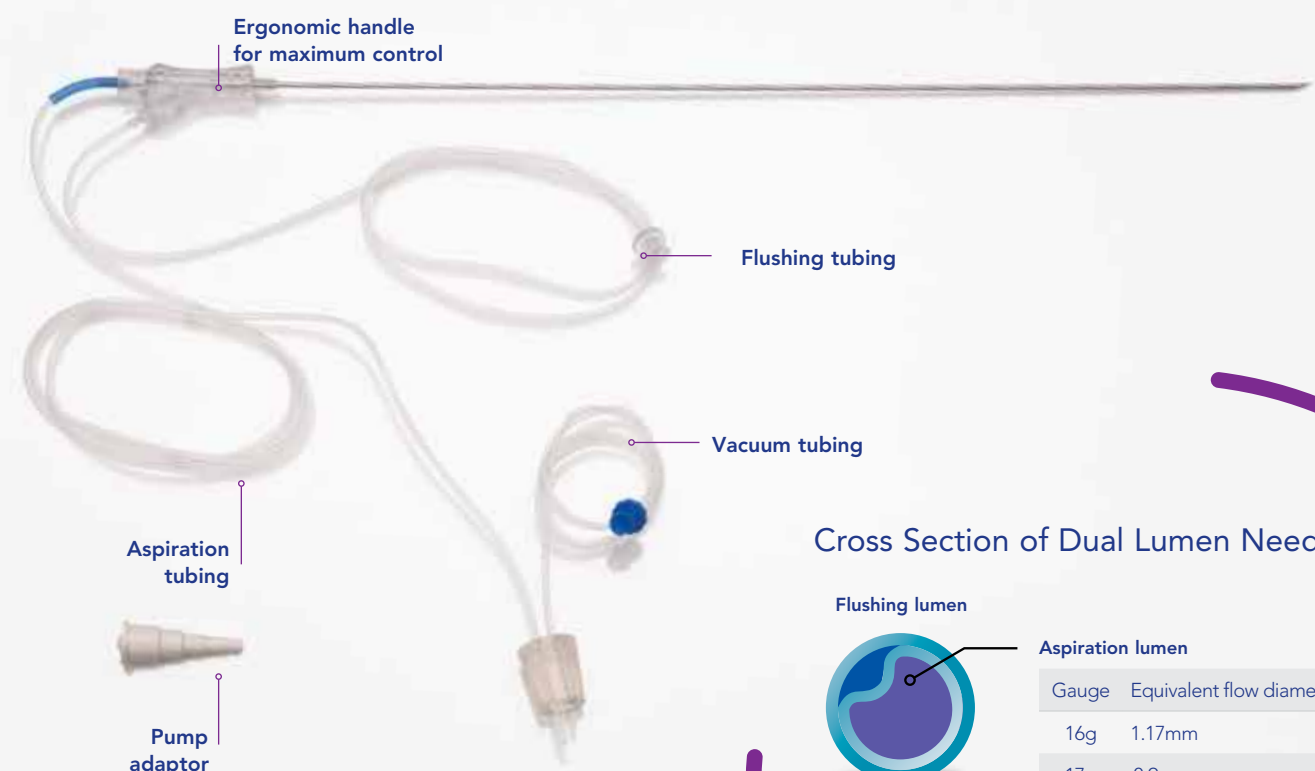
Flushing lumen extends to needle tip

Key Product Benefits

- Flushing lumen extends to needle tip providing a consistent flow rate
- Non-coring needle tip to minimize risk of blockages
- Echo marked to the very tip for accurate placement under ultrasound guidance
- Silicone bung for an easy and secure fit with test tubes
- Allows for continual or intermittent flushing during oocyte recovery
- Colour coded tubing sleeves:
16g = Blue
17g = Red
- Needle Length: 33cm
- Pump adaptor

*Not available in the USA

Wallace Dual Lumen Oocyte Recovery System (16g)



ORIGIO Stiff Single Lumen Needle*

Recovery Systems

Our needles are produced to the highest standards using diamond powder bevels for a sharp, accurate finish. All needles are fitted with kink resistant tubing with needle gauge identification.

Single Lumen Needle (Stiff Wall Type)

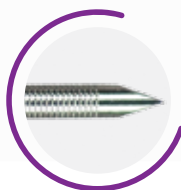


Key Product Benefits

- Stiff needle for greater control during procedure
- Improved echo marking for greater visibility under ultrasound
- Triple cut needle tip to prevent excessive bleeding and coring
- Kink resistant tubing with needle gauge identification
- Uniquely designed hub for greater control during oocyte retrieval
- Available in 16g and 17g
- Needle Length: 30cm or 35cm



Diamond powder bevels for a sharp finish



Echo markings at needle tip



Single lumen handle

*Not available in the USA



ORIGIO Stopcock*

(Stiff Wall Type)

Single lumen with stopcock valve.

Key Product Benefits

- Three-way stopcock valve for aspiration and flushing
- Kink resistant tubing with needle gauge identification
- Available in 17g

*Not available in the USA

References

1. M.Abou-Setta. (2005). Soft versus firm embryo transfer catheters for assisted reproduction: a systematic review and meta-analysis. Human Reproduction. Vol.20, No.11, pp.3114–3121.
2. Buckett, W et al. (2006). A review and meta-analysis of prospective trials comparing different catheters used for embryo transfer. Fertility and Sterility. Vol.85, No.3, pp.728-734.
3. Alvero, R et al. (2003). The presence of blood in the transfer catheter negatively influences outcome at embryo transfer.Human Reproduction. Vol.18, No.9, pp.1848-1852.
4. McIlveen, M et al. (2005). Modern embryo transfer catheters and pregnancy outcome: a prospective randomized trial. Fertility and Sterility. Vol.84, No.4, pp.996-1000.
5. Sallam, H et al. (2005). Embryo transfer: factors involved in optimizing the success. Curr Opin Obstet Gynecol 17:289–298.
6. Neithardt, A.B et al (2005). Embryo afterloading: a refinement in embryo transfer technique that may increase clinical pregnancy. Fertility and Sterility. Vol. 83, No.3.
7. Coroleu, B et al. (2006). Effect of using an echogenic catheter for ultrasound-guided embryo transfer in an IVF programme: a prospective, randomized, controlled study Human Reproduction. Advanced Access. doi:10.1093/humrep/del045
8. Wood, E et al. (2000) Ultrasound-guided soft catheter embryo transfers will improve pregnancy rates in in-vitro fertilization.Human Reproduction. Vol.15, No.1, pp.107-112.
9. Sallam, H et al. (2003). Ultrasound-guided embryo transfer: a meta-analysis of randomized controlled trials. Fertility and Sterility. Vol.80, No.4, pp.1042-1046.
10. Coroleu, B et al. (2000). Embryo Transfer under Ultrasound guidance improves pregnancy rates after in-vitro fertilization.Human Reproduction. Vol.15, No.3, pp.616–620.
11. Anderson, R et al. (2001). Transvaginal ultrasound-guided embryo transfer improves outcome in patients with previous failed in vitro fertilization cycles. Presented at Pacific Coast Reproductive Society. Rancho Mirage, California, April 25th-29th 2001.
12. Shamonki, M.I et al. (2005). Ultrasound-guided trial transfer may be beneficial in preparation for an IVF cycle. Human Reproduction. Vol.20, No.10, pp.2844–2849.
13. Billay, D et al. (2007). Evaluation of the Wallace Embryo Replacement Catheter with Obturator in a Day 3 Embryo Transfer Program. Presented at Regional Fertility Program Inc. (RFP). Calgary, AB.
14. Nielsen, I.K et al. (2002). A Wallace malleable stylet for difficult embryo transfer in IVF. Acta Obstet Gynecol Scand. Vol.81, pp.133-137.
15. Lavie, O et al. (1997). Ultrasonographic endometrial changes after intrauterine insemination: a comparison of two catheters.Fertility and Sterility. Vol.68, No. 4.
16. Tattersall, S (2006). The use of vaginal specula in improving infection control. Nursing Times Vol: 102, Issue: 09, Page No: 53.
17. Smiths Medical International Limited (2009) Research and Development Laboratory Testing.

Product Compatibility, Order Codes and Technical Information



Wallace Embryo Transfer Catheters Soft Catheters

Technical Information	Wallace Classic / Wallace SureView
Inner catheter inner diameter	0.76mm ID
Inner catheter outer diameter	1.52mm OD
Outer sheath outer diameter	2.3mm OD
Volume of catheter not including hub (18cm catheter)	0.081ml (81µl)
Volume of catheter not including hub (23cm catheter)	0.104ml (104µl)
Volume per cm length of catheter	0.0045ml (4.5µl)
Suggested loading volume	0.5 to 1cm = 2.25 to 4.5µl
Stylet OD	1.52mm OD
Stylet protrusion from outer sheath	2.0mm

Product Compatibility and Order Codes:

	Wallace SureView		Wallace Classic			
	CE118 Quantity: 10 Soft 18cm Ultrasound	CE123 Quantity: 10 Soft 23cm Ultrasound	1816 Quantity: 10 Soft 18cm Classic	1816N Quantity: 10 Soft 23cm Classic	1816S Quantity: 10 Intermediate 18cm Classic	2316 Quantity: 10 Intermediate 23cm Classic
Compatible with:						
1816ST Quantity: 10 Rigid Stylet for introducing the 18cm	✓		✓		✓	
1816NST Quantity: 10 Rigid Stylet for introducing the 23cm		✓		✓		✓
CE418 Quantity: 10 Trial transfer catheter blind end (18cm) ultrasound visible	✓		✓		✓	
CE423 Quantity: 10 Trial transfer catheter blind end (23cm) ultrasound visible		✓		✓		✓
TT1816 Quantity: 10 Trial transfer catheter blind end (18cm) Classic catheter	✓		✓		✓	
TT1816N Quantity: 10 Trial transfer catheter blind end (23cm) Classic catheter		✓		✓		✓

✓ = Compatible

Wallace Sure-Pro Embryo Transfer Catheters

Supported Catheters

Technical Information	Wallace Sure-Pro / Wallace Sure-Pro Ultra
Inner catheter inner diameter	0.76mm ID
Inner catheter outer diameter	1.52mm OD
Outer sheath outer diameter	2.5mm OD
Volume of catheter not including hub (23cm catheter)	0.104ml (104µl)
Volume per cm length of catheter	0.0045ml (4.5µl)
Suggested loading volume	0.5 to 1cm = 2.25 to 4.5µl
Stylet OD	1.52mm OD
Stylet protrusion from outer sheath	2.7mm

Product Compatibility and Order Codes:

	Sure-Pro				
	PP623 Quantity: 10 Classic, soft 23cm Supported Single-Stage	PPB623 Quantity: 10 Classic, soft 23cm Supported Elective Two-Stage	PPS623 Quantity: 10 Classic, soft 23cm Supported Two-Stage - Difficult	PPB623X Quantity: 10 Triple Pouched Classic, soft 23cm Supported Elective Two-Stage	PPS623X Quantity: 10 Triple Pouched Classic, soft 23cm Supported Two-Stage – Difficult
Obturator included within pack	✓			✓	
Stylet included within pack			✓		✓

	Sure-Pro Ultra				
	PE623 Quantity: 10 Sure View, soft 23cm Ultrasound Supported Single-Stage	PEB623 Quantity: 10 Sure View, soft 23cm Ultrasound Supported Elective Two-Stage	PES623 Quantity: 10 Sure View, soft 23cm Ultrasound Supported Two-Stage - Difficult	PEB623X Quantity: 10 Triple Pouched Sure View, soft 23cm Ultrasound Supported Elective Two-Stage	PES623X Quantity: 10 Triple Pouched Sure View, soft 23cm Ultrasound Supported Two-Stage – Difficult
Obturator included within pack	✓			✓	
Stylet included within pack			✓		✓



ORIGIO Spherical Tip

Supported Catheters

Technical Information	ORIGIO Spherical Tip
Inner catheter inner diameter	0.5mm ID
Inner catheter outer diameter	1.00mm OD
Outer sheath outer diameter	2.15mm OD
Volume of catheter not including hub	0.047cm ³ /cm
Volume per cm length of catheter	0.002cm ³ /cm
Stylet OD	1.10mm
Bulb Size	2.6mm

Product Compatibility and Order Codes:

	EchoGen		Transem Classic	
	TSET24SASEG Quantity: 25 Soft 24cm Ultrasound	TSET24SASOEG Quantity: 25 Soft 24cm Ultrasound	TSET24SAS Quantity: 25 Soft 24cm Classic	TSET24SASO Quantity: 25 Soft 24cm Classic
Compatible with:				
Obturator included within pack		✓		✓
TSS1924 Quantity: 25. Transem Stylet for Introducing the 24cm	✓	✓	✓	✓

✓ = Compatible



Wallace Intra-uterine Insemination Catheters

Technical Information

Inner catheter inner diameter	1.07mm ID
Inner catheter outer diameter	1.58mm OD
Outer sheath outer diameter	2.3mm OD
Stylet protrusion from outer sheath	2.0mm
Volume of catheter not including hub (18cm)	0.17mm
Volume per cm of catheter	0.009mm

Product Compatibility and Order Codes:

	Intra-uterine Insemination
	AIC18 Quantity: 10 - Intra-uterine Insemination catheter (18cm)
Compatible with	
1816ST Quantity: 10 - Stylet for introducing the 18cm ET catheter	✓

Origio Artificial Insemination Catheter*

Technical Information

	175mm	175mm Stiff	175mm Soft	140mm	60mm
Catheter type	175mm	175mm Stiff	175mm Soft	140mm	60mm
Sheath length	135mm	135mm	135mm	100cm	N/A
Inner catheter inner diameter	1.5mm	1.5mm	0.7mm	0.7mm	0.7mm
Inner catheter outer diameter	1.9mm	1.9mm	2.0mm	2.0mm	2.0mm
Outer sheath outer diameter	2.52mm	2.52mm	2.52mm	2.52mm	N/A
Volume of catheter not including hub	0.309mm	0.309mm	0.067mm	0.054mm	0.023mm
Volume per cm of catheter	0.018mm	0.018mm	0.004mm	0.004mm	0.004mm

Product Compatibility and Order Codes:

	Artificial Insemination Catheter				
	INCA060 Quantity: 25 60mm	INCA140 Quantity: 25 140mm	INCA175 Quantity: 25 175mm	INCA175-O Quantity: 25 175mm	INCA175-OS Quantity: 25 175mm
Compatible with:					
2 Side Eyelets			✓		
End Eyelet				✓	✓
Side Eyelet	✓	✓			
Stiff				✓	
Soft					✓

*Not available in the USA



Wallace Single Lumen Oocyte Recovery Systems

Technical Information	16g	17g	18g
Needle ID	1.24mm	1mm	0.95mm
Needle OD	1.7mm	1.42mm	1.25mm
Volume of needle not including hub	0.435ml	0.283ml	0.255ml
Volume per cm length of needle	0.012ml	0.008ml	0.007ml
Length of echogenic markings	22mm	22mm	22mm
Vacuum tubing length	480mm	480mm	
Aspiration tubing ID	1.52mm	1.31mm	1.14mm

Product Compatibility and Order Codes:

	Oocyte Recovery Needles*		Oocyte Recovery System					
	ON1633 Quantity: 10 16g Needle 33cm	ON1733 Quantity: 10 17g Needle 33cm	ONS1633 Quantity: 10 16g Needle 33cm	ONS1733 Quantity: 10 17g Needle 33cm	ONS1833 Quantity: 10 18g Needle 33cm	ONS1633LL Quantity: 10 16g Needle 33cm	ONS1733LL Quantity: 10 17g Needle 33cm	ONS1833LL Quantity: 10 18g Needle 33cm
Compatible with:								
Fitted with 500mm aspiration tube			✓	✓	✓			
Fitted with 750mm aspiration tube			✓	✓	✓			
Fitted with 950mm aspiration tube			✓	✓	✓			
Fitted with 500mm aspiration tube with luer lock						✓	✓	✓
Fitted with 750mm aspiration tube with luer lock						✓	✓	✓
Fitted with 950mm aspiration tube with luer lock						✓	✓	✓

Note: For 950mm tubing, order codes above. For 750mm and 500mm tubing lengths, the code is preceded by -750 or -500

✓ = Compatible

*Not available in the USA

Wallace Dual Lumen Oocyte Recovery Systems

Technical Information	16g	17g
Needle OD	1.7mm	1.5mm
Volume of aspiration lumen not including hub	0.411ml	0.251ml
Volume of flushing lumen not including hub	0.044ml	0.046ml
Volume per cm length of aspiration lumen	0.011ml	0.007ml
Volume per cm length of flushing lumen	0.001ml	0.001ml
Length of echogenic markings	10mm	10mm
Vacuum tubing length	512mm	512mm
Flushing tubing length	712mm	712mm
Aspiration tubing ID	1.52mm	1.31mm

Product Compatibility and Order Codes:

	Oocyte Recovery System					
	DNS1633-950 Quantity: 10 16g Needle 33cm	DNS1633-750 Quantity: 10 16g Needle 33cm	DNS1633-500 Quantity: 10 16g Needle 33cm	DNS1733-950 Quantity: 10 17g Needle 33cm	DNS1733-750 Quantity: 10 17g Needle 33cm	DNS1733-500 Quantity: 10 17g Needle 33cm
Compatible with:						
Fitted with 500mm aspiration tube			✓			✓
Fitted with 750mm aspiration tube		✓			✓	
Fitted with 950mm aspiration tube	✓			✓		

✓ = Compatible

ORIGIO Single Lumen Stiff Wall Type Oocyte Recovery System*

Technical Information	16g	17g
Needle ID	1.06mm	0.92mm
Needle OD	1.65mm	1.47mm
Volume of needle not including hub	0.32cm ³	0.24mm ³
Volume per cm length of needle	0.009cm ³ /cm	0.007cm ³ /cm
Length of echogenic markings	8mm	8mm
Aspiration tubing ID	1.70mm	1.50mm
Aspiration tubing OD	2.50mm	2.50mm

Product Compatibility and Order Codes:

	Stiff Wall Type Single Lumen Needle															
	SL1603011S - Quantity: 25 16g Needle 30cm	SL1603511S - Quantity: 25 16g Needle 35cm	SL1603014S - Quantity: 25 16g Needle 30cm	SL1603014LS - Quantity: 25 16g Needle 30cm	SL1603064S - Quantity: 25 16g Needle 30cm	SL1603044S - Quantity: 25 16g Needle 30cm	SL1703011S - Quantity: 25 17g Needle 30cm	SL1703511S - Quantity: 25 17g Needle 35cm	SL1703014S - Quantity: 25 17g Needle 30cm	SL1703064S - Quantity: 25 17g Needle 30cm	SL1703044S - Quantity: 25 17g Needle 30cm	SL1703011MS - Quantity: 20 17g Needle 30cm	SL1703011NS - Quantity: 20 17g Needle 30cm	SL1703014NS - Quantity: 20 17g Needle 30cm	SL1703011BS - Quantity: 20 17g Needle 30cm	SL1703014BS - Quantity: 20 17g Needle 30cm
Compatible with:																
Fitted with 40cm aspiration tube						✓					✓					
Fitted with 60cm aspiration tube	✓															
Fitted with 100cm aspiration tube	✓	✓	✓	✓			✓	✓	✓			✓	✓	✓	✓	✓
Fitted with 40cm suction tube			✓	✓	✓	✓				✓	✓	✓			✓	✓
Fitted with 100cm suction tube	✓	✓					✓	✓				✓	✓		✓	
Fitted with stopcock in middle													✓			
Fitted with stopcock at needle													✓	✓		
Fitted with stopcock at bung															✓	✓
Fitted with large bung				✓												

✓ = Compatible

*Not available in the USA

ORIGIO Vacuum Pump Accessories*

Product Compatibility and Order Codes:

	Vacuum Pump Accessories					
	VTS200MM Quantity: 25 Tubing Length 200cm	VTS200MF Quantity: 25 Tubing Length 200cm	VTS200FF Quantity: 25 Tubing Length 200cm	HPFILTER Quantity: 25 Disposable Filters	30114 Quantity: Push Fit/ Female Adapter	30004 Quantity: Female/Female Adapter
Compatible with:						
Vacuum Tube 200cm Male	✓			✓		✓
Vacuum Tube 200cm Male Female		✓		✓	✓	✓
Vacuum Tube 200cm Female			✓	✓	✓	

✓ = Compatible

*Not available in the USA



Sales & distribution availability of products will vary across markets.

Legal Manufacturers: Smiths Medical International Ltd., Hythe, UK and ORIGIO a/s Måløv, Denmark

ORIGIO a/s
Knardrupvej 2
2760 Måløv
Denmark
Tel: +45 46 79 02 00
www.origio.com



CooperSurgical Fertility Companies